

ROAD INDEX

A	J	STILLWELL RD.	A3
B	K	BROOKVIEW RD. F3 BUNDYSBURG RD. F4-F6 BURTON WINDSOR RD. C6-F5	AI-A4 TRAILWOOD RD. F4
C	L	CHARDON WINDSOR RD. A2-F2 CLAY STREET B1-B6	U
D	M	DURKEE RD. A6-B6	MADISON RD. D1-D6 MAYFIELD RD. A4-F4
E	N		W
F	O	OLD STATE RD. A6	X
G	P	FLOWERSIDE RD. F4	Y
H	Q	PIONEER RD. B5-F5 PLANK RD. E1-F2 PRINCETON RD. B2-B6	Z
I	R	HAYES RD. E5 HUNTLEY RD. B3-F3 HUNT RD. E2-E4	

- ① HUNTSBURG ELEM. SCHOOL
- ② AMISH SCHOOL
- ③ AMISH SCHOOL
- ④ HUNTSBURG BAPTIST CH.
- ⑤ HUNTSBURG CONGREGATIONAL CH.
- ⑥ HUNTSBURG CEMETERY
- ⑦ HUNTSBURG CEMETERY
- ⑧ UNITED STATES POST OFFICE

HUNTSBURG TOWNSHIP

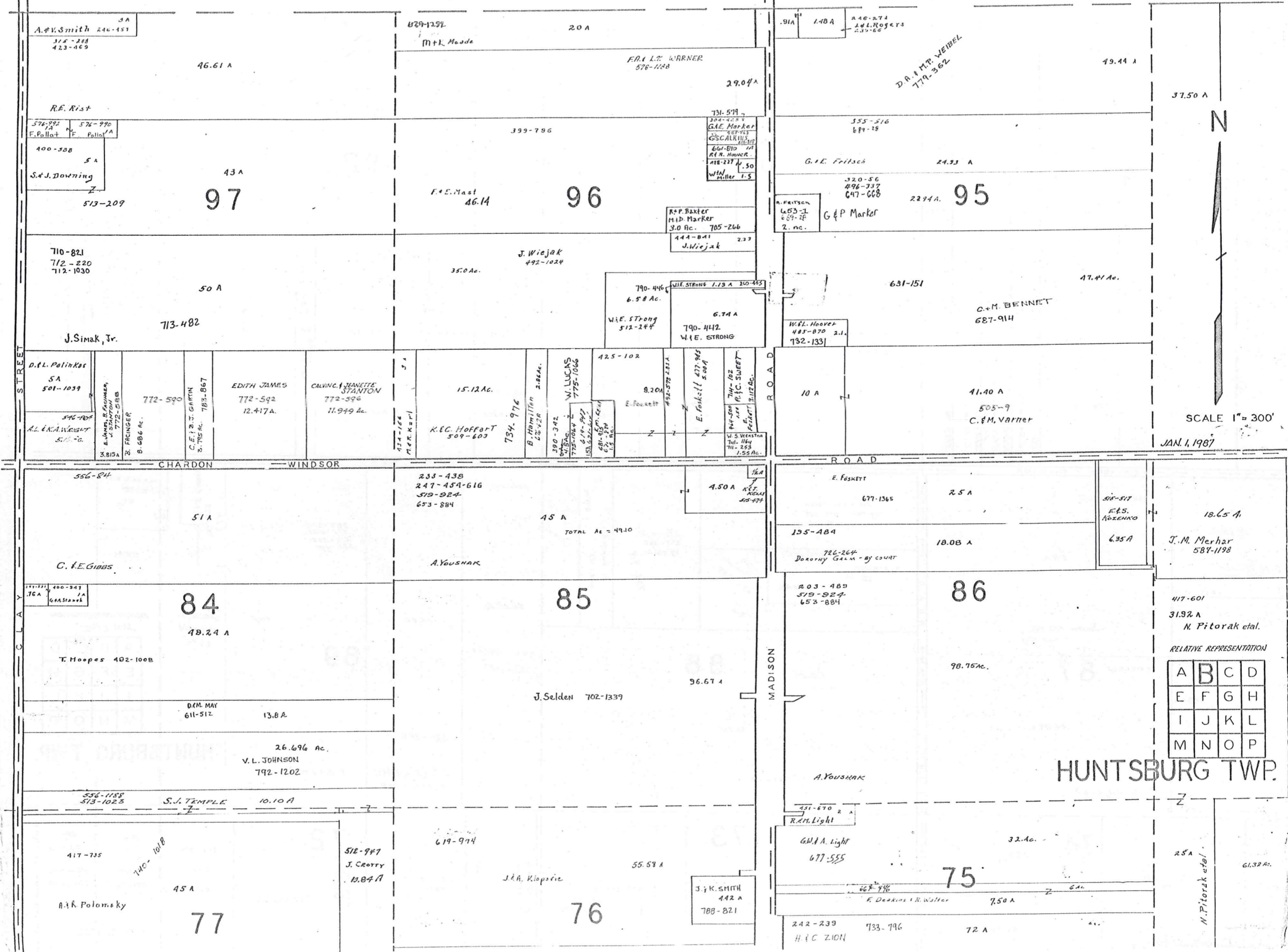
SCALE: 1" = 2000'
ROBERT E. PHILLIPS,
GEAUGA COUNTY ENGINEER

--- UNPAVED ROADS
--- TOWNSHIP LINE
--- PAVED ROADS
--- COUNTY LINE



MONTVILLE

TOWNSHIP

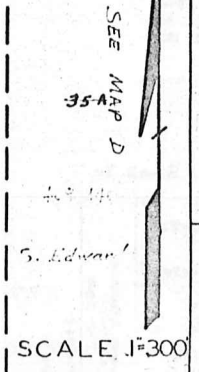
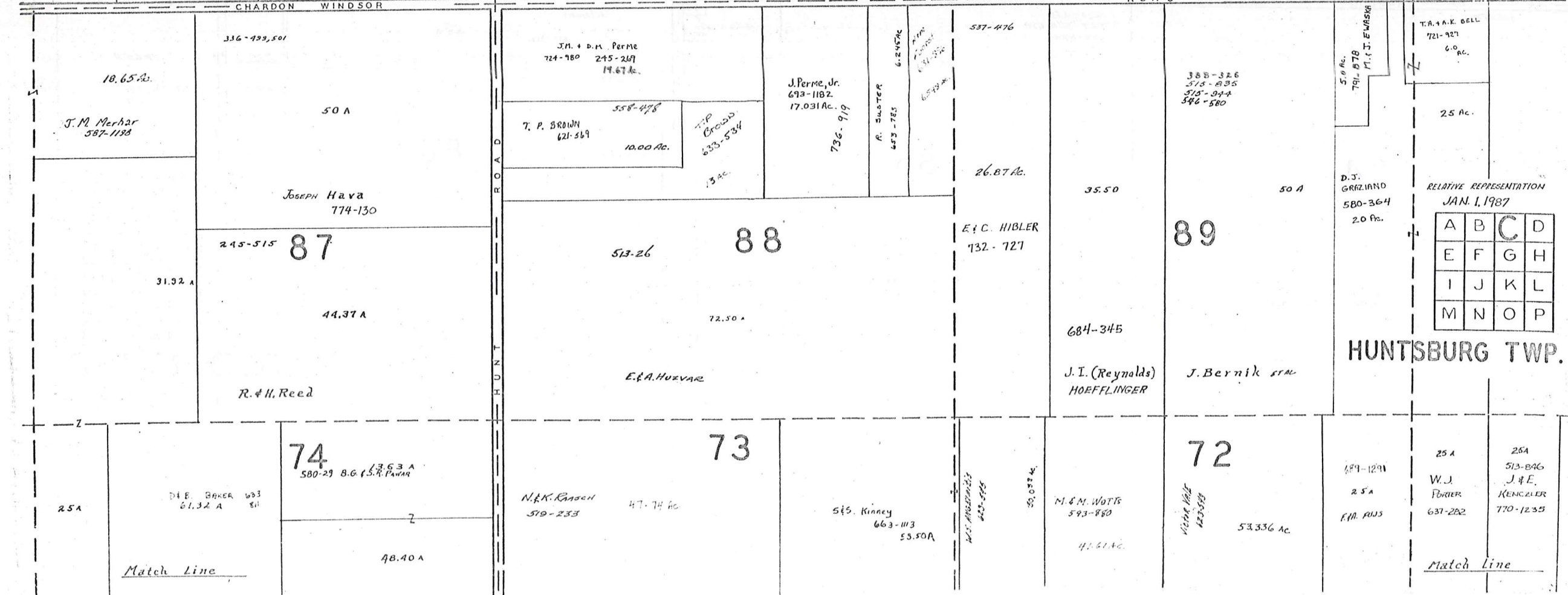
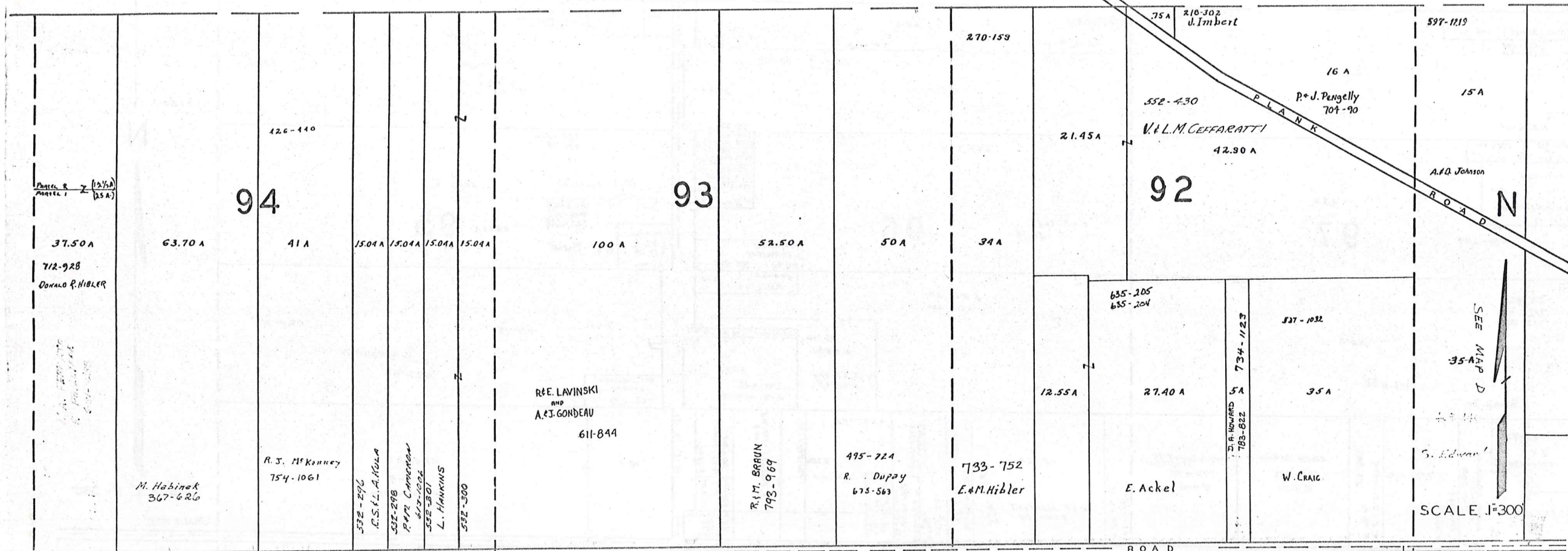


SCALE 1" = 300'
 JAN. 1, 1987

RELATIVE REPRESENTATION

A	B	C	D
E	F	G	H
I	J	K	L
M	N	O	P

MONTVILLE TOWNSHIP

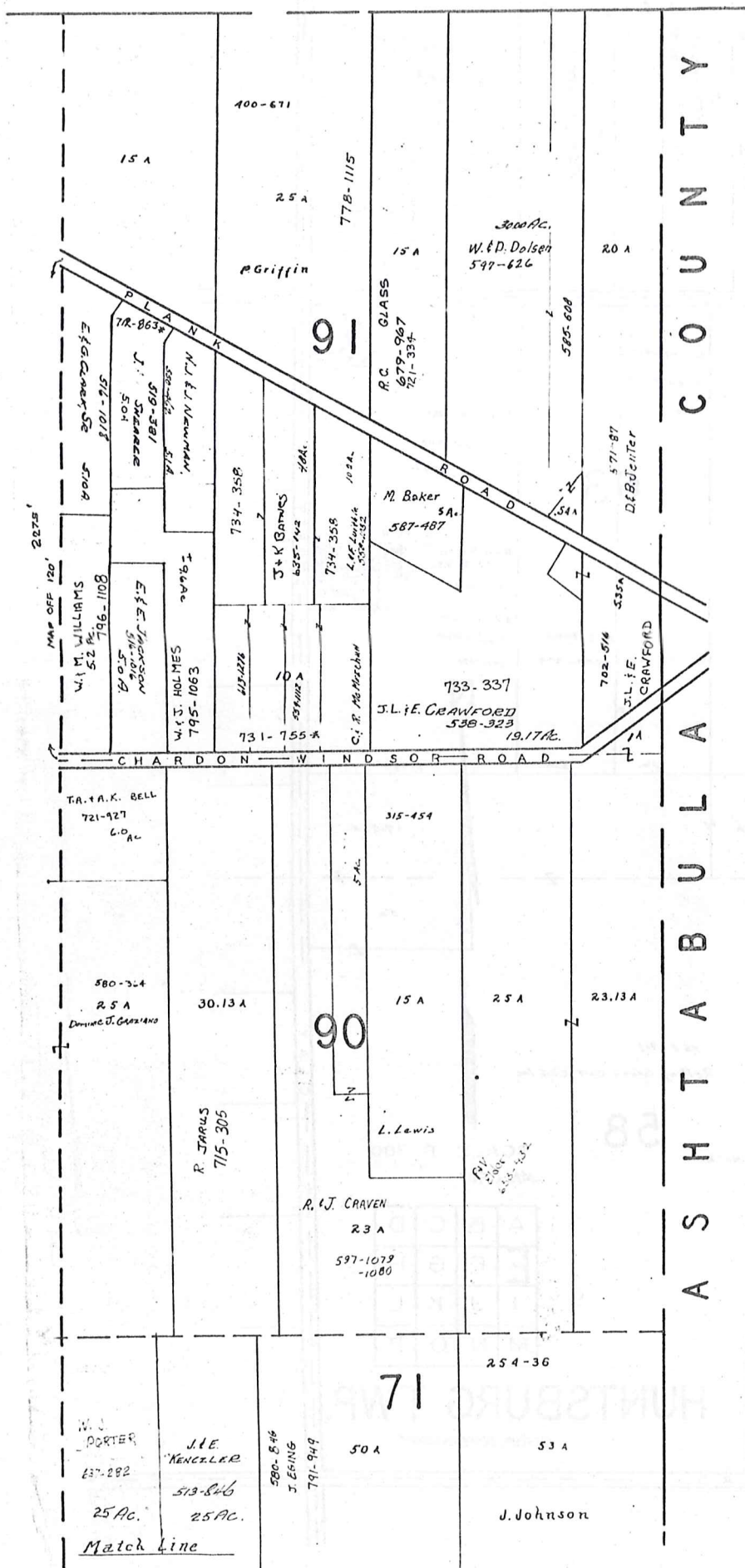


RELATIVE REPRESENTATION
JAN. 1, 1987

A	B	C	D
E	F	G	H
I	J	K	L
M	N	O	P

HUNTSBURG TWP.

MONTVILLE TWP.



C O U N T Y
A S H T A B U L A

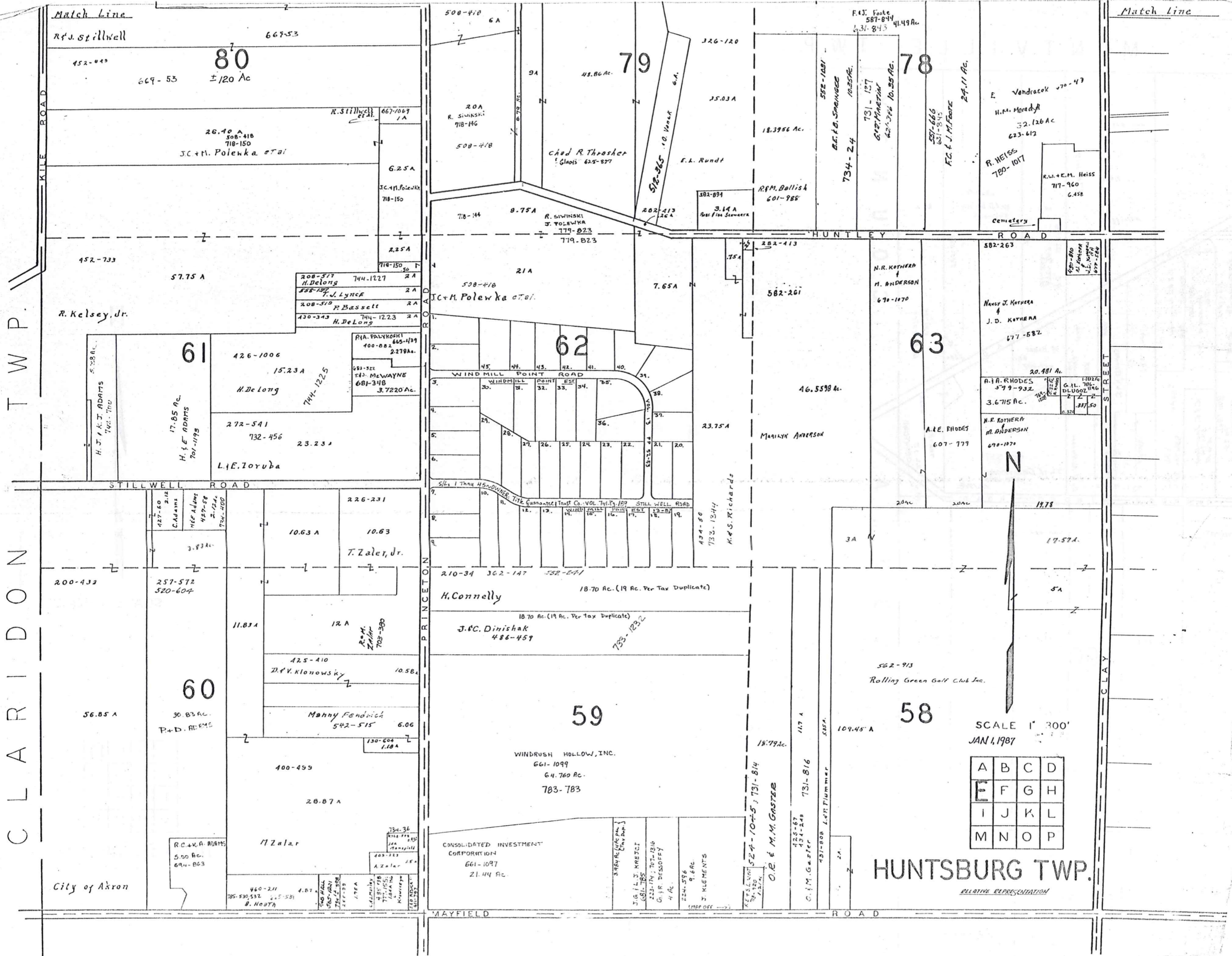


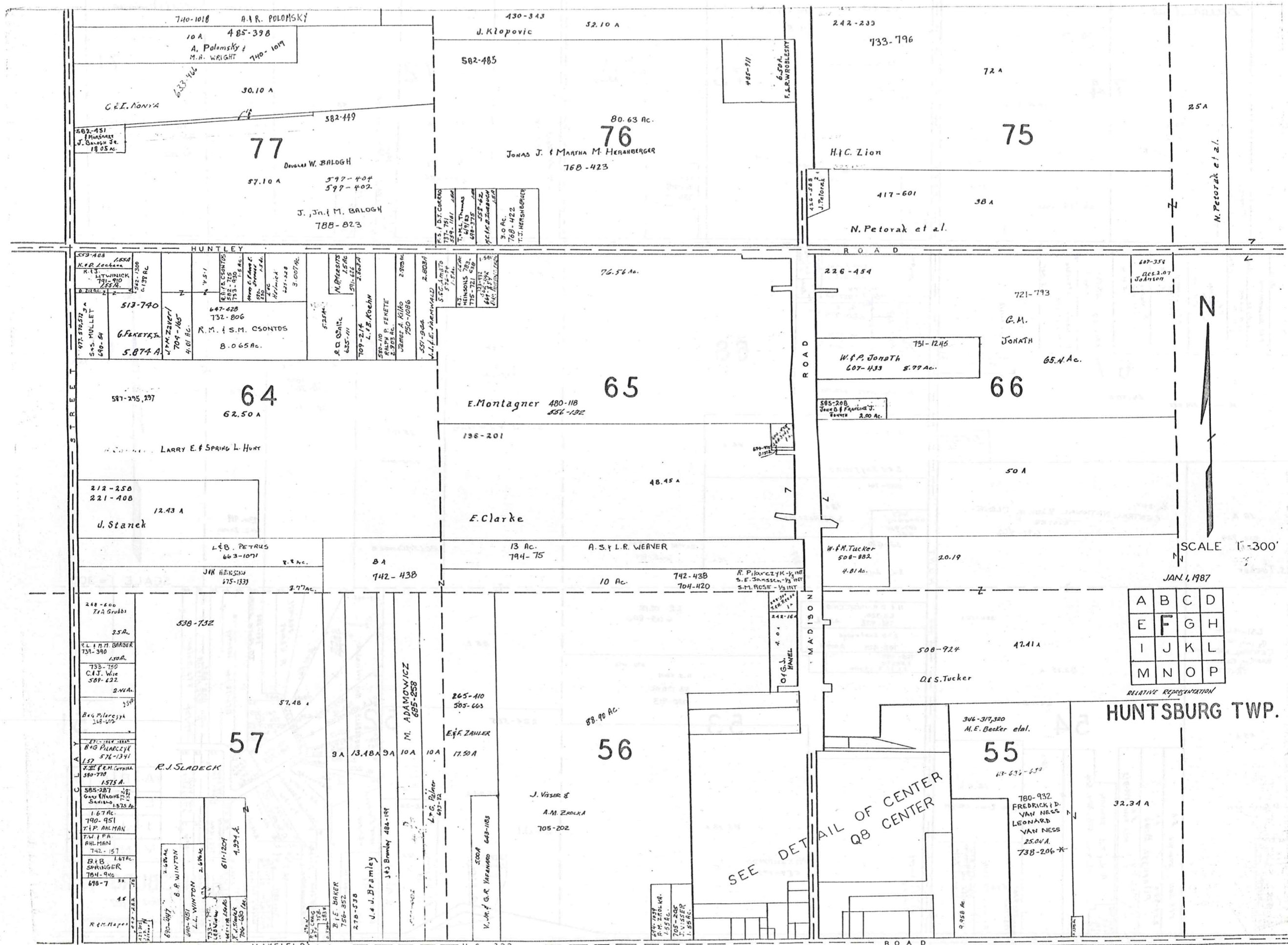
SCALE 1"=300'

JAN. 1, 1987

A	B	C	D
E	F	G	H
I	J	K	L
M	N	O	P

HUNTSBURG TWP.
RELATIVE REPRESENTATION





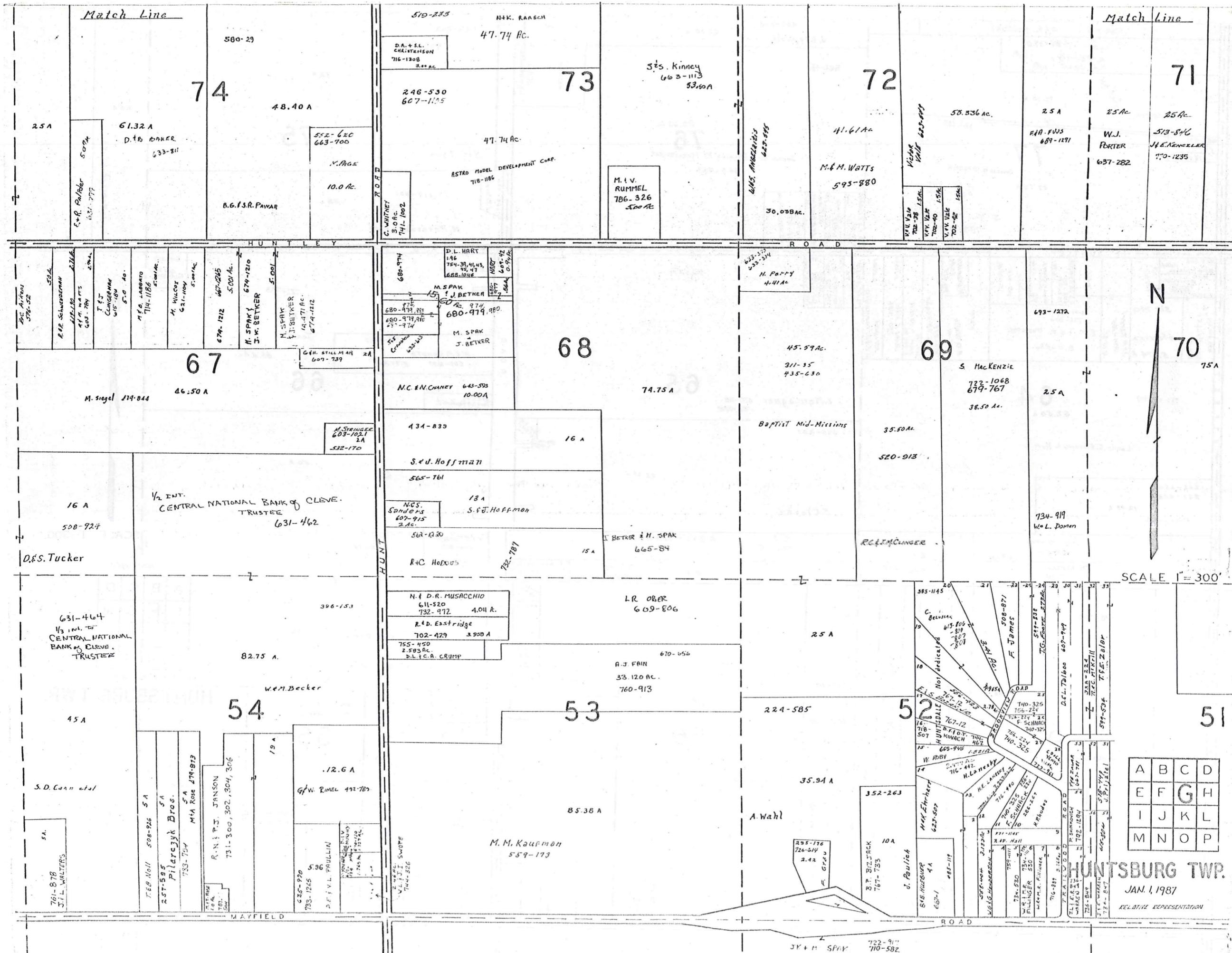
SCALE 1"=300'

JAN 1, 1987

A	B	C	D
E	F	G	H
I	J	K	L
M	N	O	P

RELATIVE REPRESENTATION
HUNTSBURG TWP.

SEE DETAIL OF CENTER
QB CENTER



Match Line

Match Line

74

73

72

71

68

69

70

67

54

53

52

51



SCALE 1" = 300'

A	B	C	D
E	F	G	H
I	J	K	L
M	N	O	P

HUNTSBURG TWP.
JAN. 1, 1987
RELATIVE REPRESENTATION

The Benedictine Order of Cleveland
509-1031

47

97 Ac.

609-303

Huntsburg Twp Trustees
568-1330 1846.

647-177
Meadowridge Farm
58.934

48

72.80 A

710-582
722-916

49

152.50 A

36 A

30 A

237-222

30.50 A

K. Byrne

Meadowridge Farm
647-177

J.K. + M. SARK

32.86 A

V.F.S. SHVORAB

50 A

34

52.19 A

M.M. MILLER
665-1252

33

99 Ac.

J.J. + E.B. MAST
599-505

46.15 A

32

104.69 A

17.21 A



SCALE 1" = 300'

233-320+2.73
728-69)*

43 A

5+2-1209

C.W. + D.A. DROTAR

A.S. YODER
657-288

STEPHEN KUDOWSKI

PIONEER

ROAD

Match Line

R.L. G.A.
B.W.M.
689-952

33.61 A

553-703

ELI G. GWINN

R.G. + B.L. TOWNSEND
637-546

27

49.30 Ac.

E.E. + K.F. McDONALD
637-915
637-K81
1407 A

J. + I. DETWEILER
699-127, 129

E.E. + K.F. McDONALD
1A
101-45

17 Ac

52.1-108

7.5 A

C. H. MILLER

35.64 Ac.

J. + I. DETWEILER
699-127, 129

M.R. + E.J. BYLER
680-340

28

73 A

SEE MAP
O 5 Ac

SEE MAP
O 5 Ac

SEE MAP
O 5 Ac

188-525
133-39

A. + A. MISTERKA

100 A 29

210-526

24.50 A

U. + J. BYLER
562-329
143-16

C. + M. H. Detweiler
3997 Ac
101-1278

10.25
102-665
C. + M. H. Detweiler

HUNTSBURG TWP.

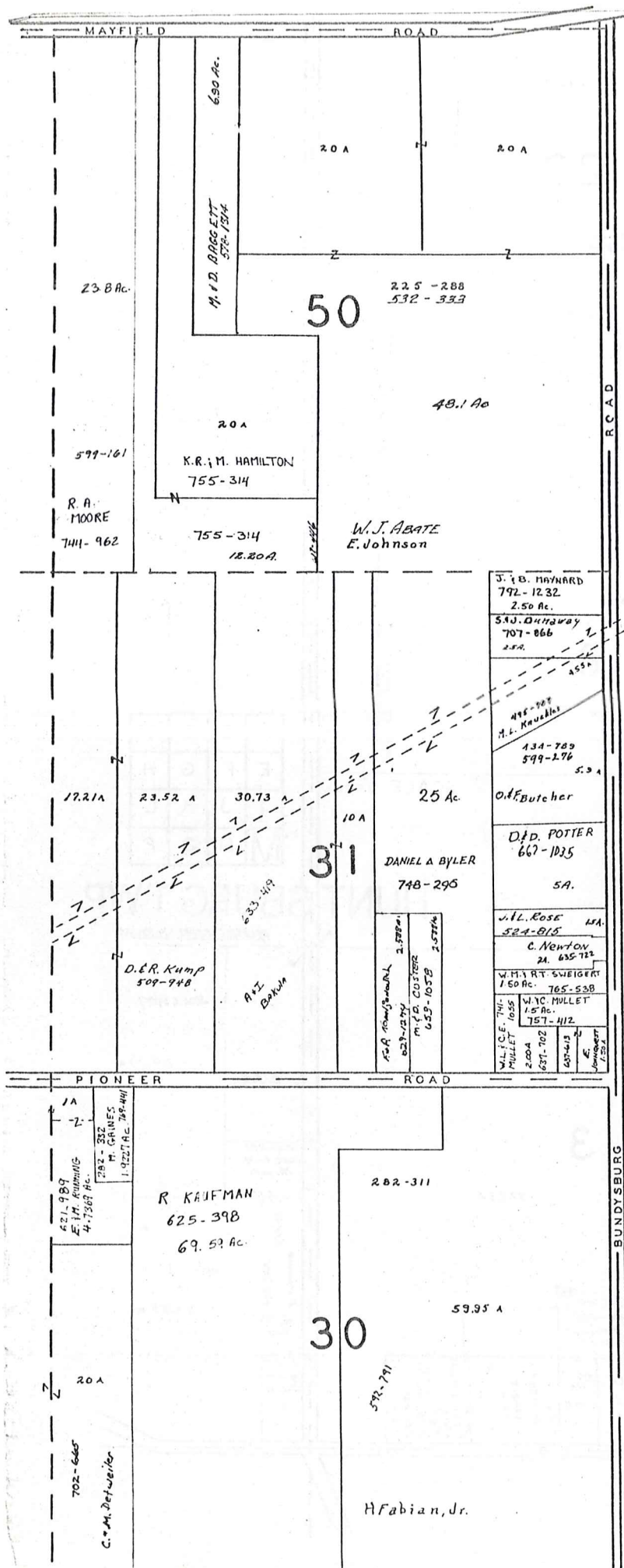
RELATIVE REPRESENTATION

JAN. 1, 196

Match Line
SEE PAGE 1

A	B	C	D
E	F	G	H
I	J	K	L
M	N	O	P

JANUARY 1, 1967



A S H T A B U L A C O U N T Y

MAYFIELD ROAD US 322								
1	2	3	4	A	5	6	7	8
1.08 A	1 A	1 A	1 A	.60A	1 A	1 A	1 A	1.13 A
405-551 653-1111 F. & M. S. Nov	431-239 F. & R. Finnerazzo	225-475 M. Keyes et al	D. H. HALL	1.90				

SICZ SUBDIVISION
VOL. 6 PG. 87
LOT 44
SCALE 1" = 100'



SCALE 1" = 300'

JAN 1, 1987

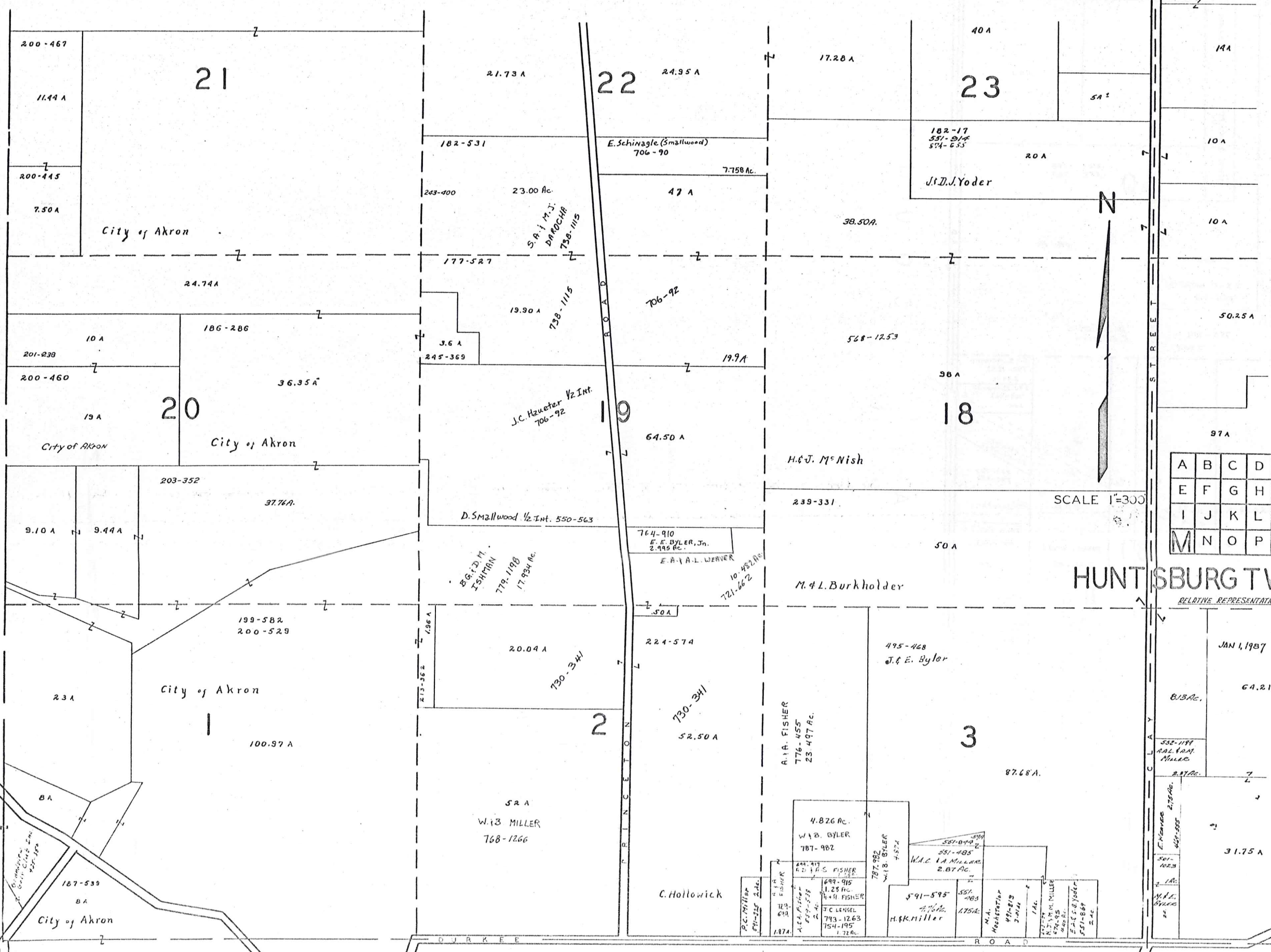
A	B	C	D
E	F	G	H
I	J	K	L
M	N	O	P

RELATIVE REPRESENTATION

HUNTSBURG TWP.

C
L
A
R
I
D
O
N
T
O
W
N
S
H
I
P

M
I
D
D
L
E
F
I
E
L
D
T
O
W
N
S
H
I
P



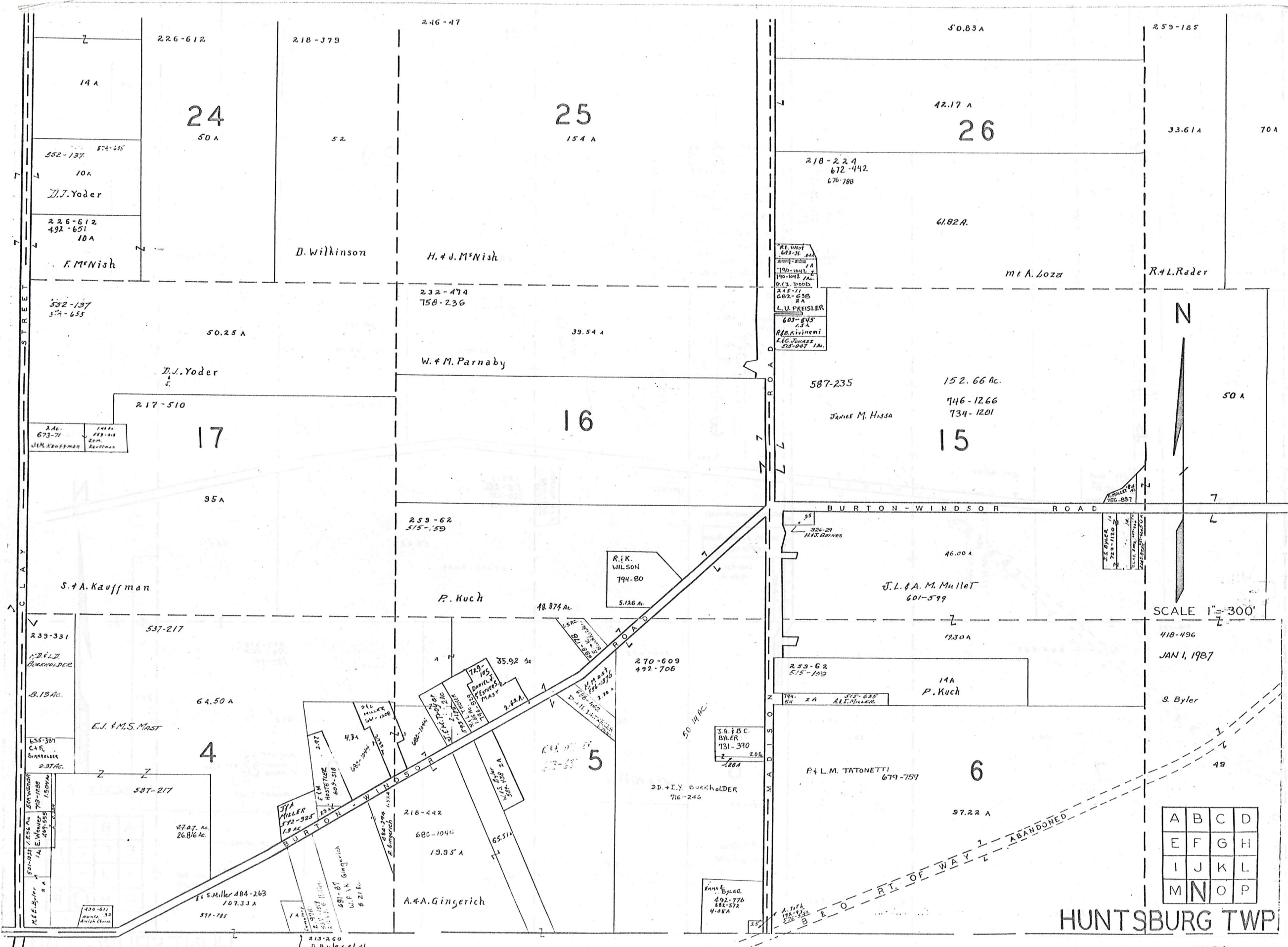
A	B	C	D
E	F	G	H
I	J	K	L
M	N	O	P

SCALE 1"=300'

HUNTSBURG TWP

RELATIVE REPRESENTATION

JAN 1, 1987



SCALE 1" = 300'

418-496

JAN 1, 1987

S. Byler

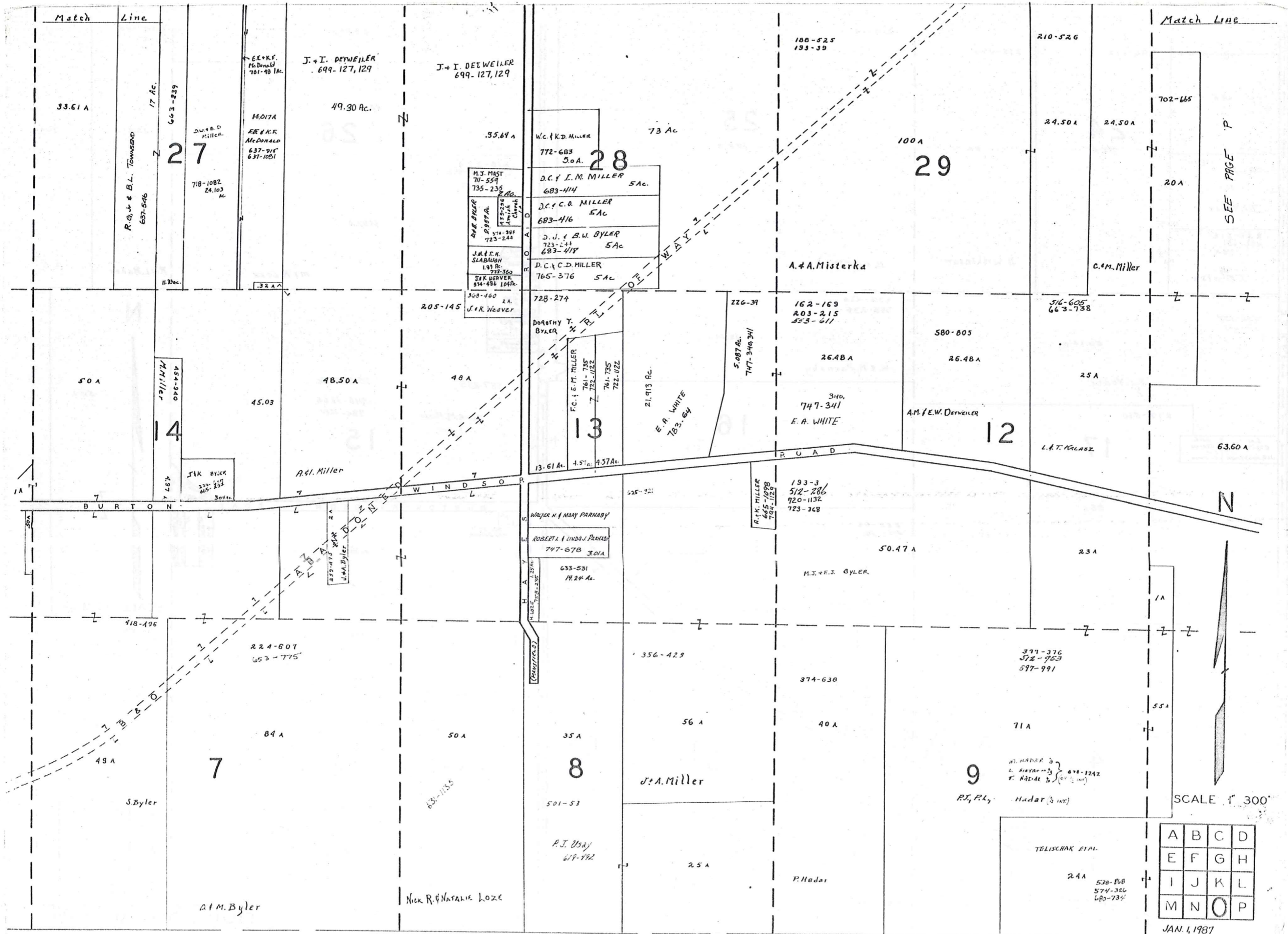
49

A	B	C	D
E	F	G	H
I	J	K	L
M	N	O	P

HUNTSBURG TWP

RELATIVE REPRESENTATION

M I D D L E F I E L D T O W N S H I P



SEE PAGE P

N

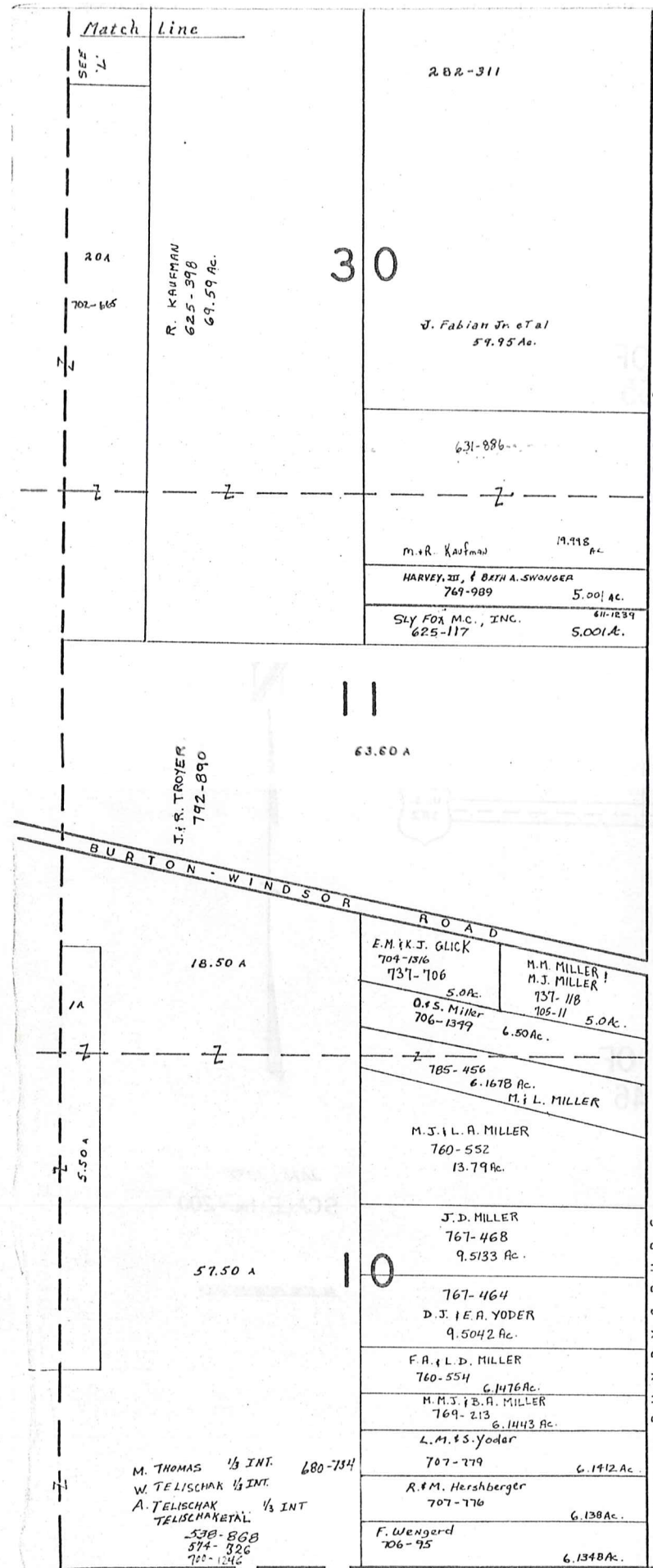
SCALE 1" = 300'

A	B	C	D
E	F	G	H
I	J	K	L
M	N	O	P

JAN. 1, 1987

M I D D L E F I E L D T O W N S H I P H U N T S B U R G T W P

RELATIVE REPRESENTATION



ASHTABULA COUNTY

MIDDLEFIELD TWP.

HUNTSBURG TR
CEMETER



SCALE: 1" = 300'
JAN 1, 1987

RELATIVE REPRESENTATION

A	B	C	D
E	F	G	H
I	J	K	L
M	N	O	P

HUNTSBURG TWP

Explanation and Use Sheet for Geauga County, Ohio

SAMPLE (PARTIAL) COUNTY INDEX MAP



- Township Boundary
- Township Name
- Village Boundary
- Village Name
- Tract Lot Number
- Street Name
- Acreage
- Deed Book & Page
- Owners Name
- Denotes Continous Ownership

SAMPLE (PARTIAL) MAP PAGE



- Map Page Number
- Village Name
- Village Boundary
- Township Name

SAMPLE (PARTIAL) MUNICIPALITY INDEX MAP



- Street Name
- Village Name
- Township Name

USE OF THE MAP VOLUME

1. LOCATE THE GENERAL AREA OF INTEREST ON THE COUNTY INDEX MAP, ATLAS PAGE 'B', AND NOTE THE MUNICIPALITY NAME (TOWNSHIP OR VILLAGE).
2. REFER TO THE TABLE OF CONTENTS, ATLAS PAGE 'C', AND NOTE THE BEGINNING ATLAS PAGE NUMBER FOR THE MUNICIPALITY OF INTEREST.
3. TURN TO THE PAGE INDICATED. ON THIS PAGE WILL APPEAR AN INDEX MAP FOR THAT MUNICIPALITY.
4. LOCATE THE GENERAL AREA OF INTEREST AND NOTE THE MAP PAGE NUMBER. THIS MAY BE EITHER A LETTER OR A NUMBER.
5. MAP PAGES ARE IN ALPHABETICAL (OR NUMERICAL) SEQUENCE FOLLOWING THE MUNICIPALITY INDEX MAP. FOLLOW SEQUENCE TO THE MAP PAGE INDICATED.
6. LOCATE SPECIFIC PARCEL OF INTEREST AND NOTE THE DESIRED INFORMATION.

NOTE: ON SOME MAPS YOU MAY BE REFERRED TO A DETAIL SHEET SHOWING AN ENLARGEMENT OF THE AREA. THESE MAPS ARE FOUND AT THE END OF THE REGULAR MAP PAGES IN EACH MUNICIPALITY IN EITHER ALPHABETICAL OR NUMERICAL SEQUENCE.

NOTE: CHARDON VILLAGE HAS TITLE SHEETS. TO LOCATE OWNERS NAME, NOTE THE PARCEL NUMBER, REFER TO THE TITLE PAGE FOLLOWING THE MAP OF INTEREST, FOLLOW NUMERICAL SEQUENCE TO THE PARCEL NUMBER OF INTEREST AND NOTE THE DESIRED INFORMATION. IN ALL OTHER MUNICIPALITIES THE OWNERS NAME APPEARS ON THE MAP PAGE.

This book is the property of REAL ESTATE DATA, INC. and is distributed by REDI under a leasing arrangement requiring return to REDI upon termination of the lease. REDI reserves the right to reclaim this book if found in the possession of any firm or person where possession was obtained through any unauthorized source.